



Achieve the impossible



Abrites Diagnostics for Mitsubishi  
**User Manual**

Version: 1.6

[www.ABRITES.com](http://www.ABRITES.com)

<b>List of Revisions</b>			
<b>Date</b>	<b>Chapter</b>	<b>Description</b>	<b>Revision</b>
29.Aug.2012		First version of the document.	1.0
06.Jun.2013		Update.	1.1
02.Oct. 2013		Update for latest version	1.2
01.Oct. 2015		Revision	1.3
March 21. 2017	2.1	New service function "Coding" added	1.4
Jan. 20.2018	2.1	Simplified Key Registration (no working key and no PIN available)	1.5
Feb. 28.2018	2.2	Added "SW update" Special Function	1.6

## 1 INTRODUCTION

“ABRITES diagnostics for Mitsubishi” is a Windows PC based professional diagnostic software for vehicles from the Mitsubishi Motors group. With the help of this software you can perform complete diagnostic operations of all CAN-based vehicles from the Mitsubishi group, which are in most cases unsupported from the producer diagnostic testers. The “ABRITES diagnostics for MITSUBISHI” provides also complete standard diagnostics (read faults, erase faults, current data, actuator tests, adaptations) for MITSUBISHI vehicles.

Our PC USB diagnostic interface supports K-Line and CAN-BUS interface.

Diagnostics is performed via the OBD-II connector.

## 2 VEHICLE DIAGNOSTICS WITH “**ABRITES DIAGNOSTICS FOR MITSUBISHI**”

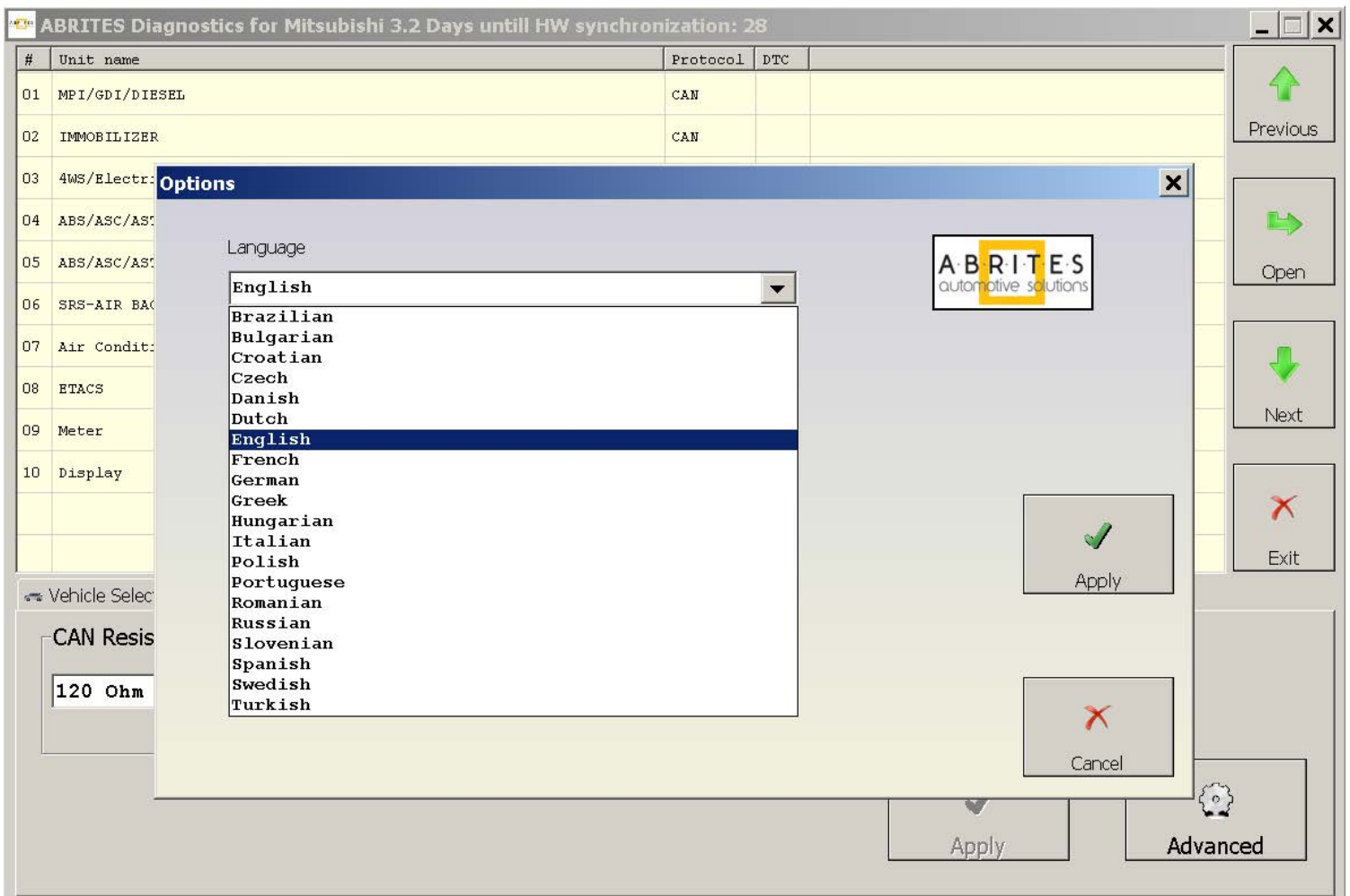
The “ABRITES diagnostics for MITSUBISHI” consists basically of two parts:

- Standard diagnostic functions like reading/clearing fault codes (DTC), scanning available control units in the car, displaying actual values (measured parameters), performing actuator tests and performing adaptations.
- Special functions like Key Programming, Engine Control Unit Reflashing, Dump Tool and Coding.

## 2.1 Standard Diagnostic Functions

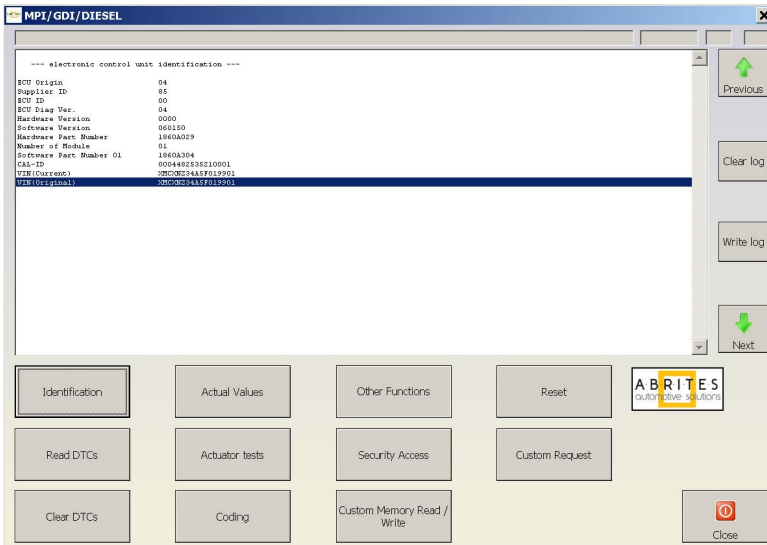
All devices, which may be present in the car, are listed in the main screen of the “ABRITES diagnostics for MITSUBISHI”. If you want to connect to a specific device, please double click on it or select it and press the “Connect” button. The “ABRITES diagnostics for MITSUBISHI” will try to connect to the device.

The Abrites diagnostics for Mitsubishi supports multiple languages both for the user interface of the program as well as the display of fault codes. To change the default English language, please click on “Options” and then “Advanced” and the following screen will appear:

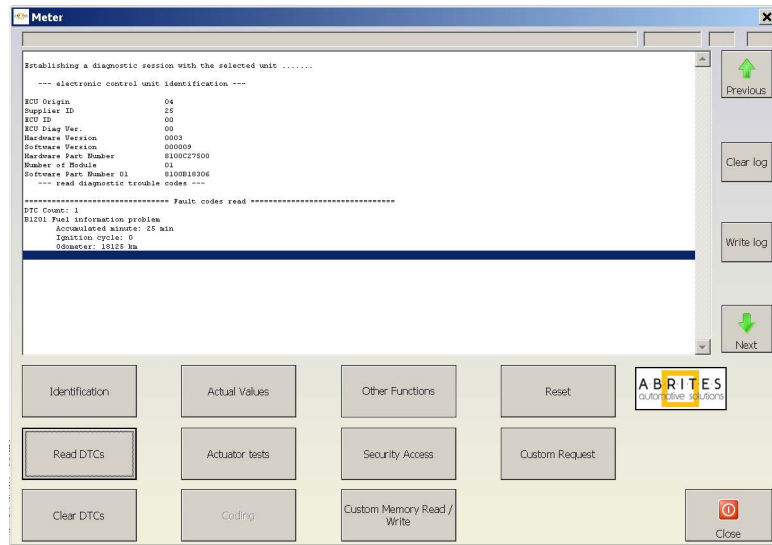


When a control unit is connected, you can make identification, Read DTCs, Clear DTCs, display Actual Values, make Actuator Tests, edit the module coding and get access to many "Other Functions" the different vehicle models and modules you are connected to offer. Here's an example of how the menus look like:

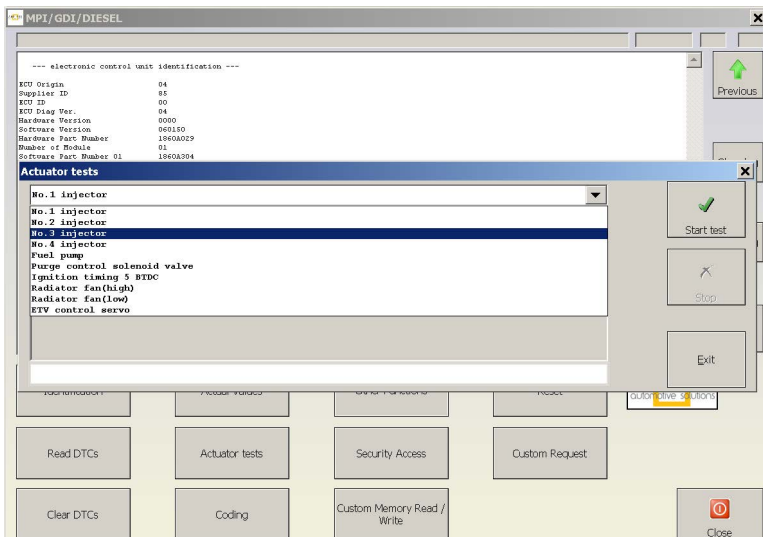
**Identification:**



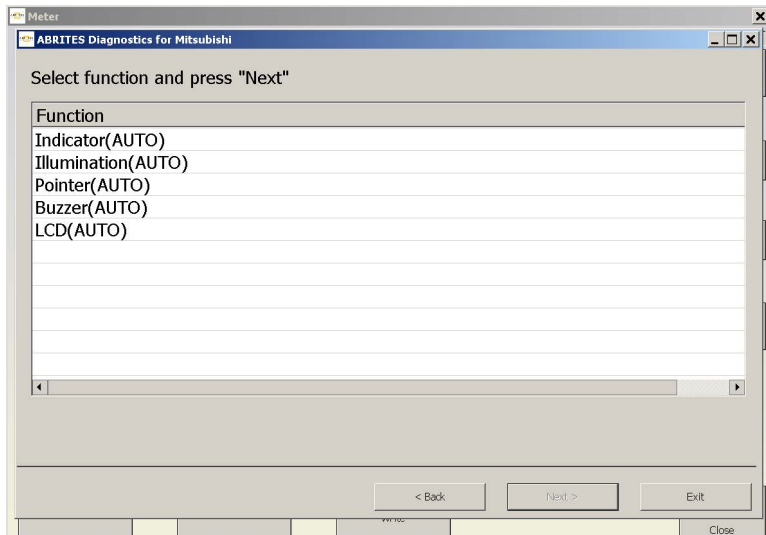
**Read DTCs:**



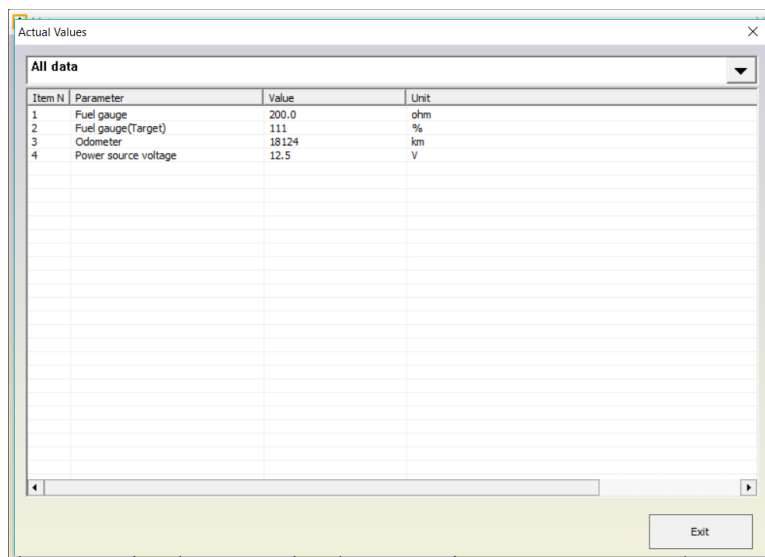
**Actuator Tests:**



**Other Functions:**

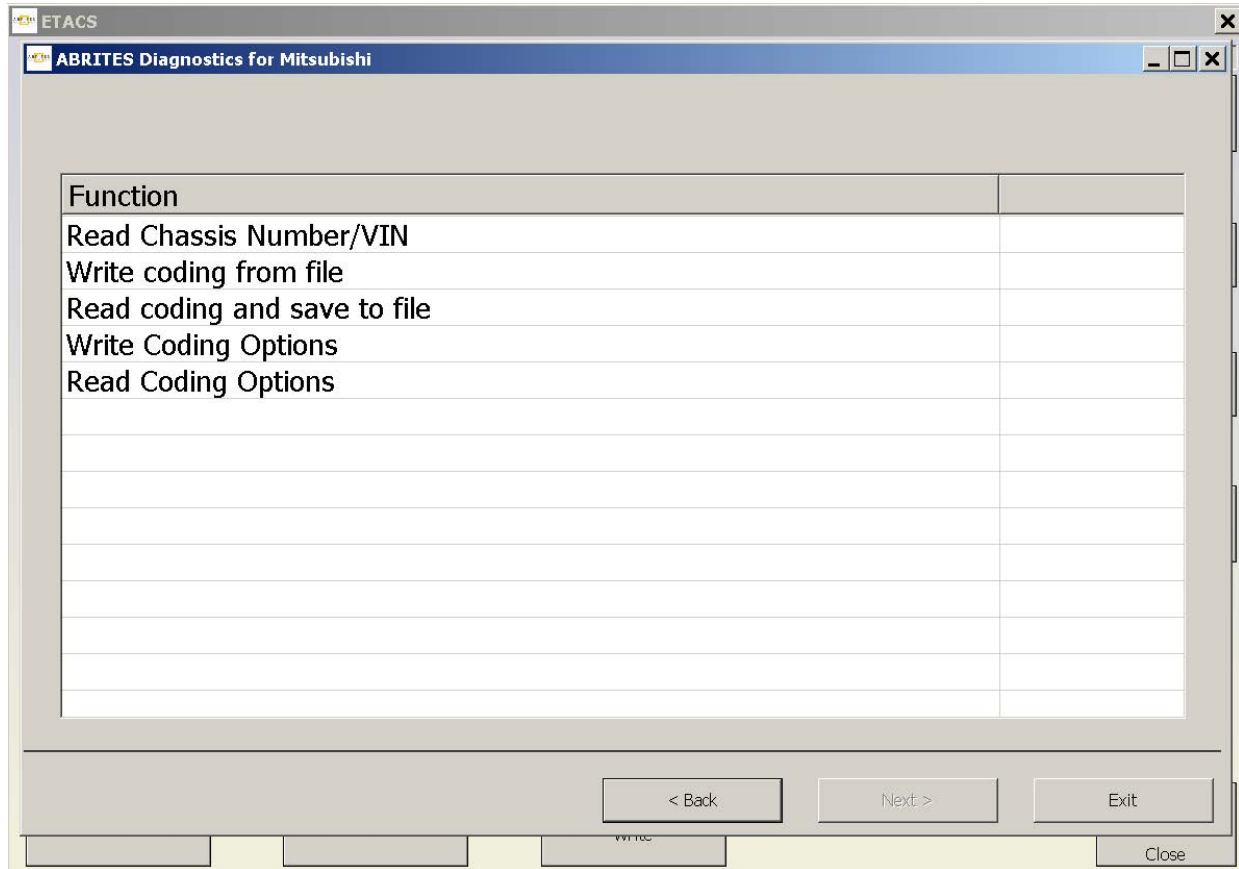


**Actual Values:**

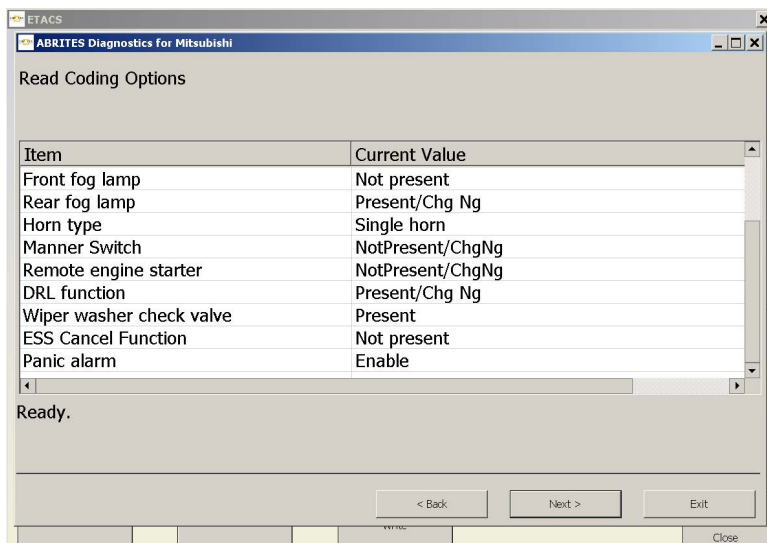
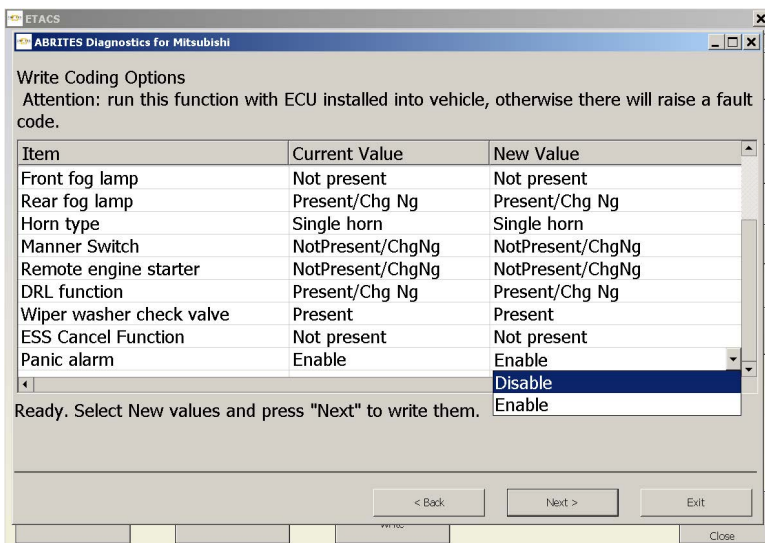


## Coding

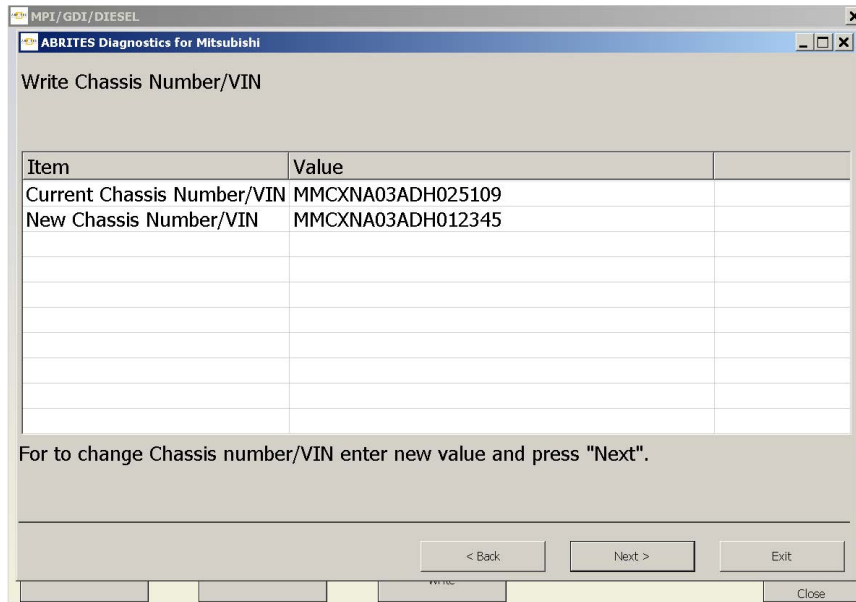
The "Coding" Function in the Abrites Diagnostics for Mitsubishi software will allow you to edit the coding values of the vehicle you are working on. You will be granted the possibility to read the chassis VIN number, load and write the coding from another file, read the coding and save it to a file, which you can later use to write to another vehicle, especially when adapting different modules that do require the coding to be done and the correct VIN number written.



You can also find more "Write Coding Options" and "Read Coding Options".



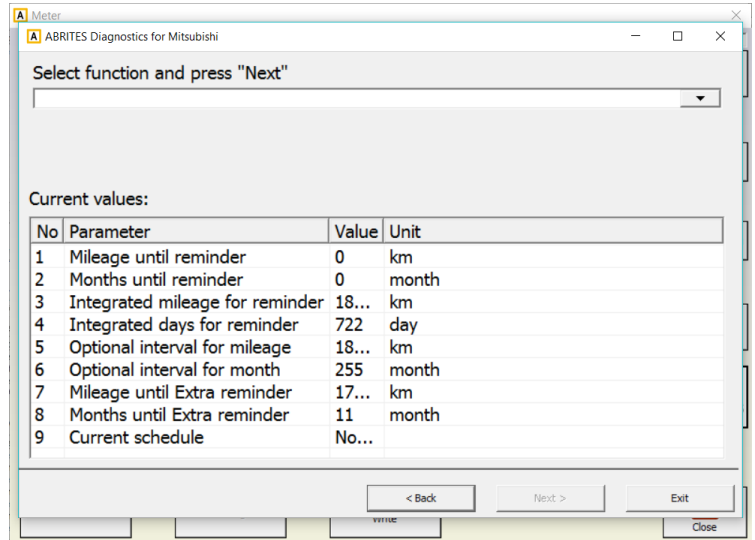
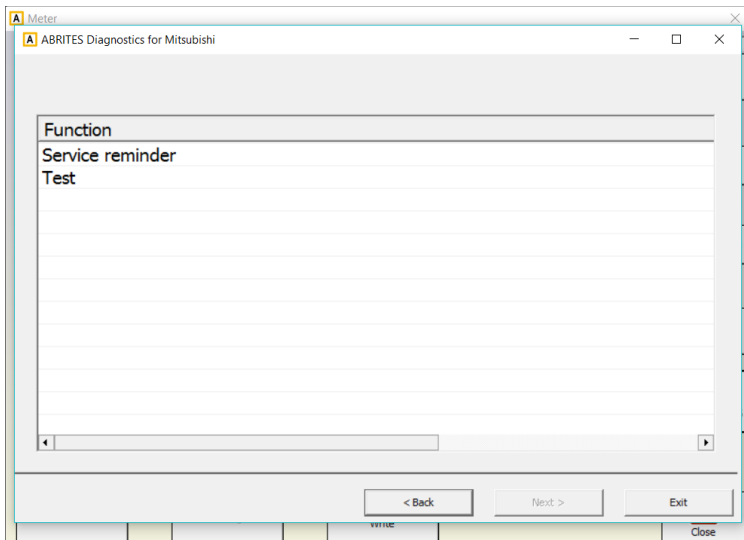
Writing the VIN looks like this:



The "Other Functions" Menu will grant you access to options, such as the "Service Reminder" settings:

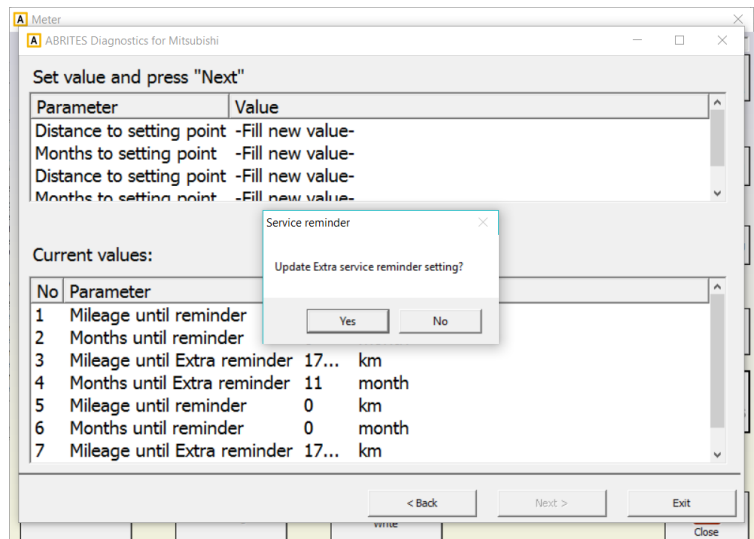
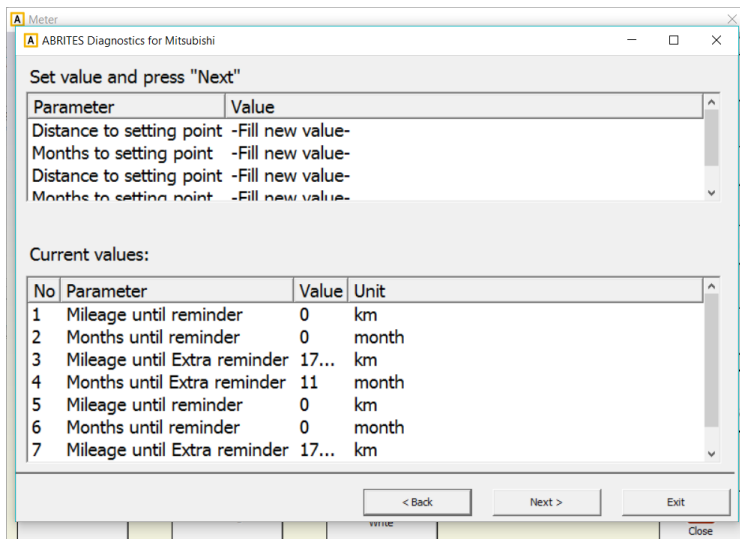
1.

2.



3.

4.



## 2.2 Special Functions

The appropriate special function is opened by selecting it from the list box and double-clicking on it, or by selecting it and then pressing the "Open" button.

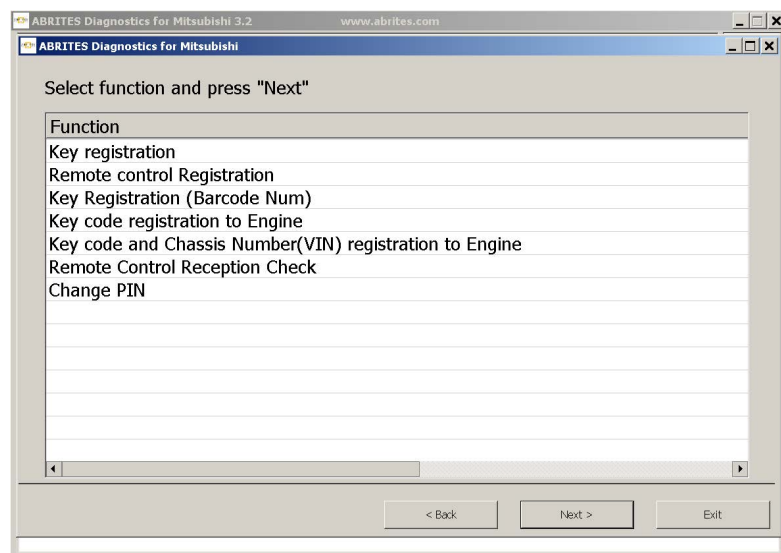
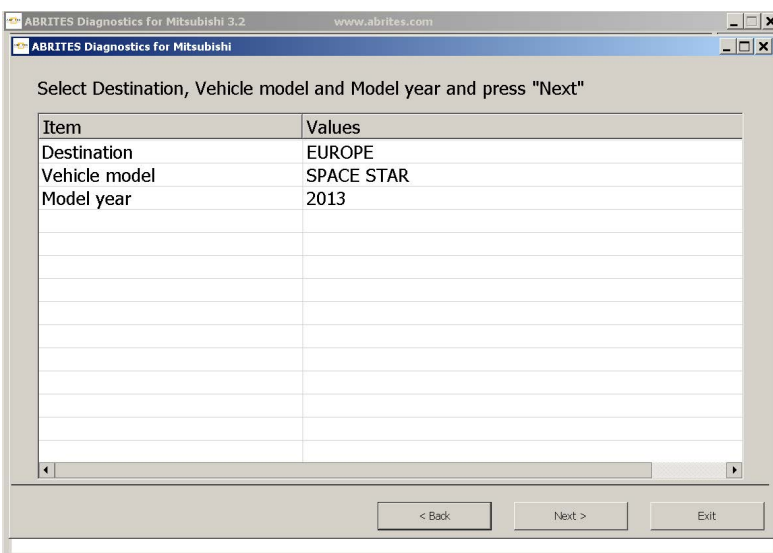
### 2.2.1 "Key Programming"

The key programming function currently works by CAN. Please, see below the supported vehicles. In the next versions we will add more vehicles to this list FREE for all customers who own the key learning function. We also plan to support vehicles with KLine interface. Keys can be programmed when the pin code of the vehicle is known. The Mitsubishi diagnostics has a database of default pin codes. The pin code can be changed with the Mitsubishi diagnostics. If the pin code is changed - next time when a key is programmed the new pin code should be used.

*Attention: L200 models, which are produced in Mexico after year 2010 do not use the default PIN code. Instead, each L200 car has its own PIN code.*

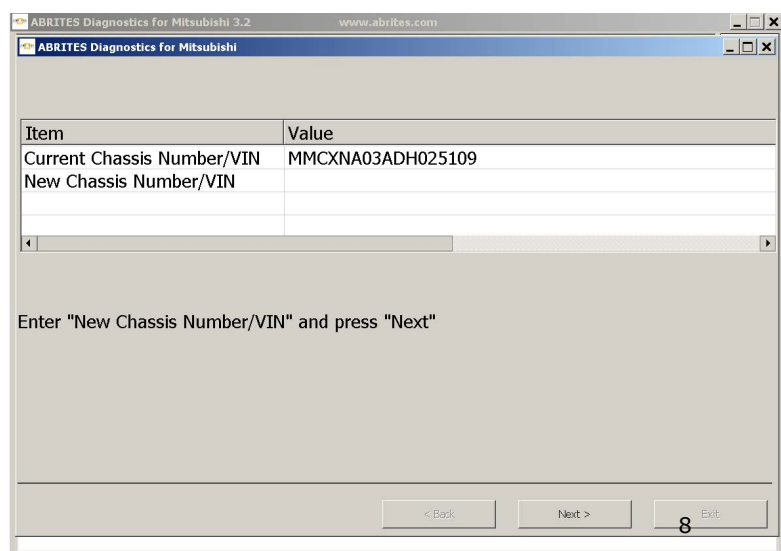
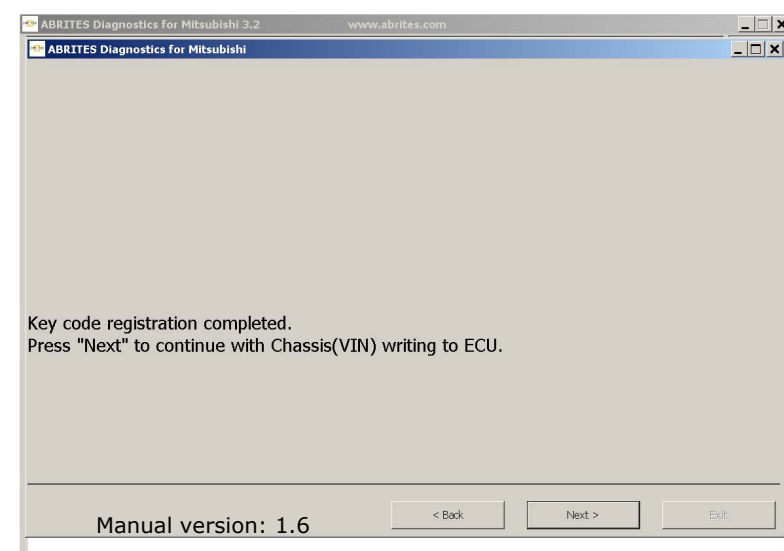
*Attention: most Mitsubishi Grandis vehicles produced after year 2006 are diagnosed on CAN, but there are some which are diagnosed on K-Line. The K-Line vehicles are not supported yet.*

When you select this special function the following screens appear, where you have to select the vehicle model:



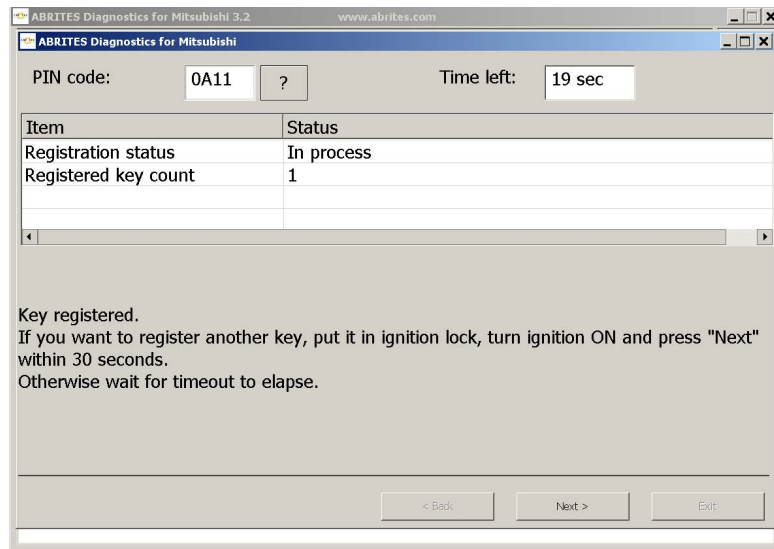
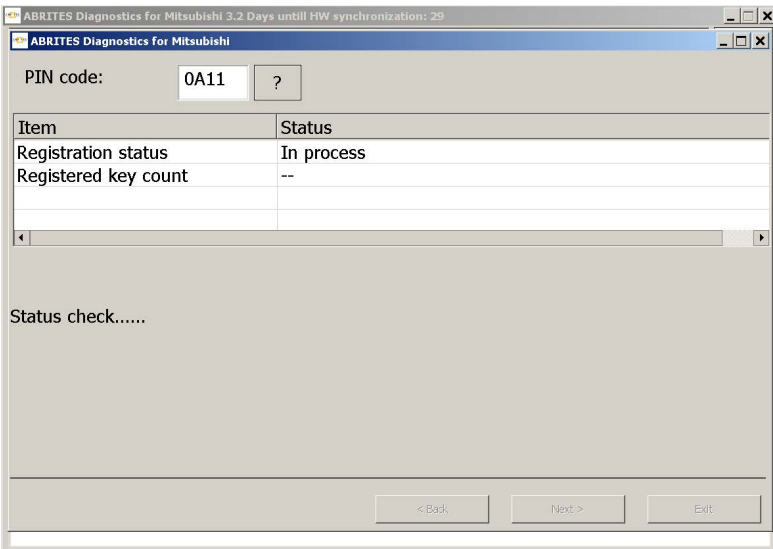
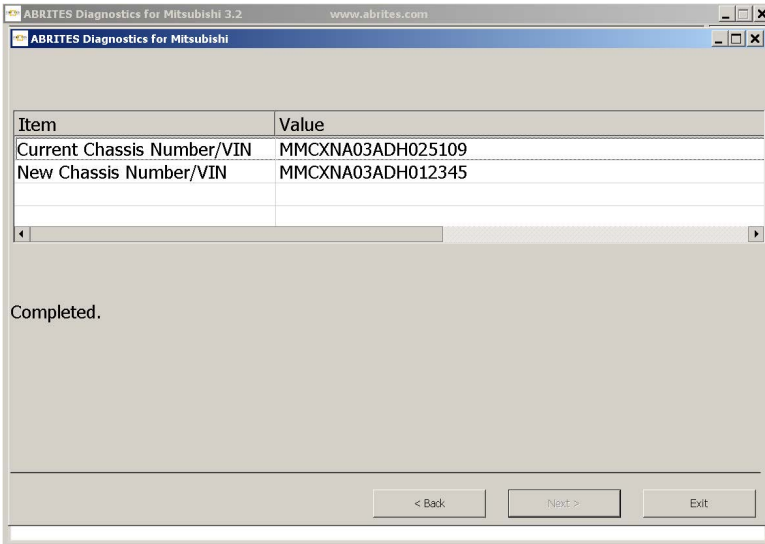
At this moment you must choose the desired functionality.

After you are ready with the selection you must press the "Next" button. The following screens appear:

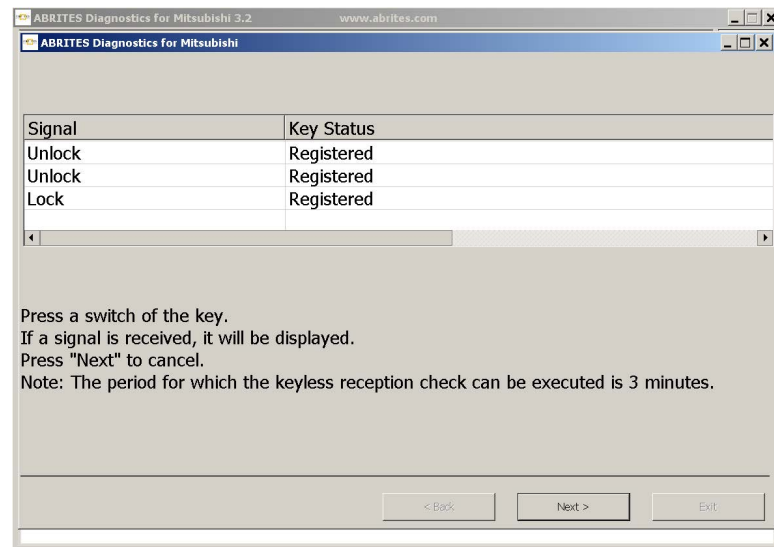
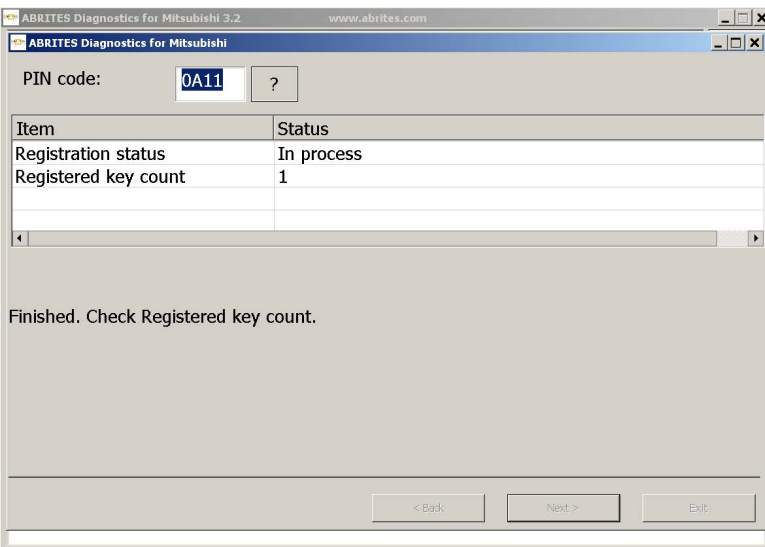




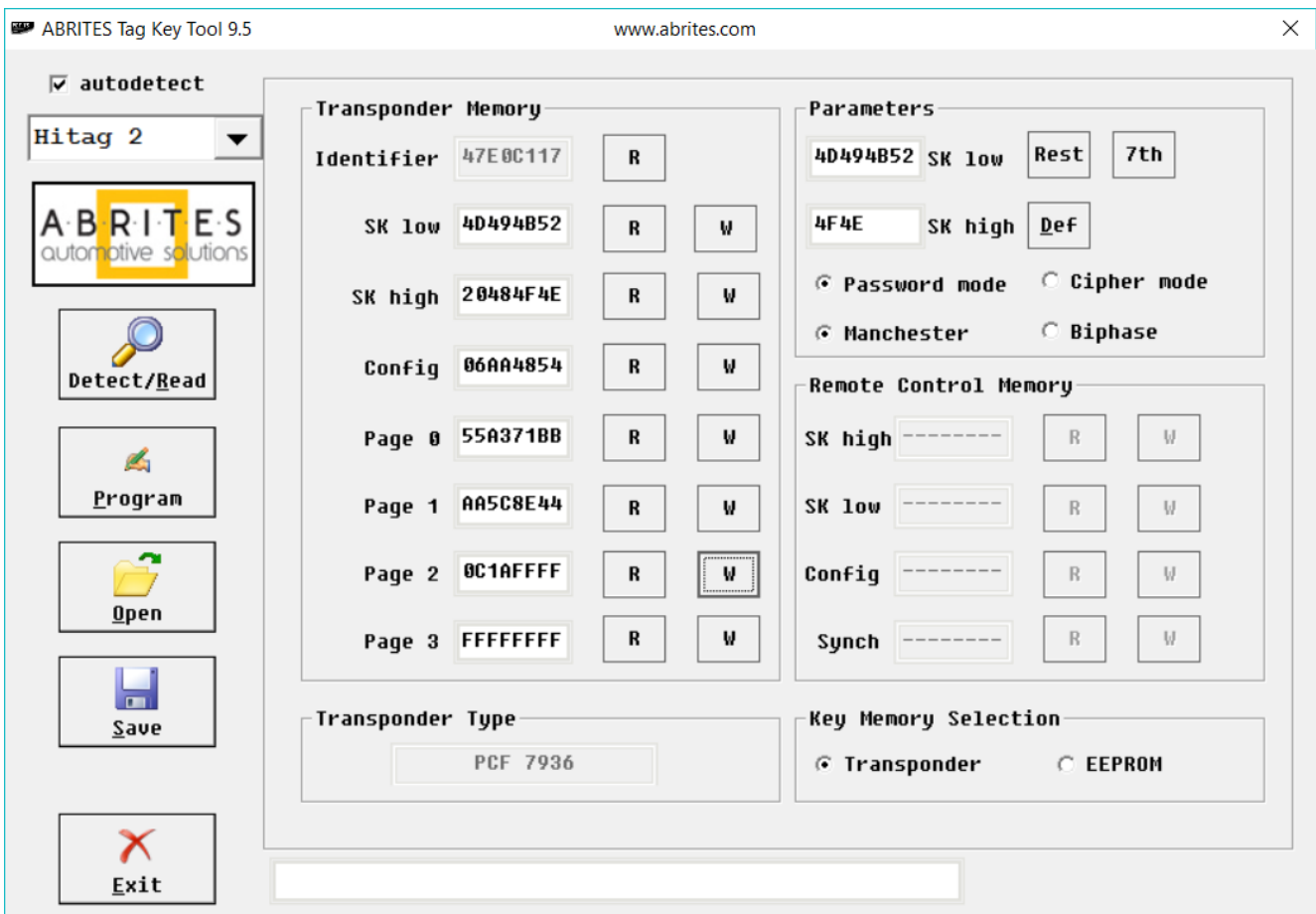
You can now enter the "New Chassis Number/VIN", enter the PIN code and press "Next":



After the key programming is successful, you will see the following screen windows:



The PIN code of the vehicle will be automatically generated once the procedure is started. Before proceeding with the key programming function, you should make sure that you are using the correct transponder chip. The transponder in the key should be HITAG (PCF7936). It should be configured to work in Password Mode. The transponder can be configured by using the "Tag Key Tool" software.



After the transponder has been pre-programmed correctly, you may click the buttons "Program a Key" or "Erase Keys".

### ***Programming Keys***

It is important to note that if you see a message "Password Incorrect", or "PIN Code could not be verified" this probably means that the PIN code is incorrect. You should not try to use this PIN more than 3 times, because the immobilizer will get locked. If the immobilizer gets locked, you must wait with Ignition ON for 15-30 minutes and then redo the procedure.

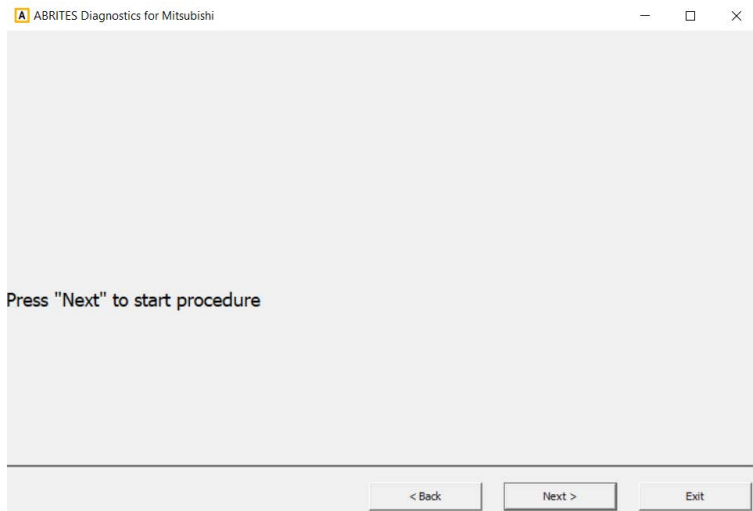
In the Appendix you can find a detailed explanation of the smart key (fast system) key programming procedure.

### 2.2.1.1 "Simplified Key Registration (no working key and no PIN available)"

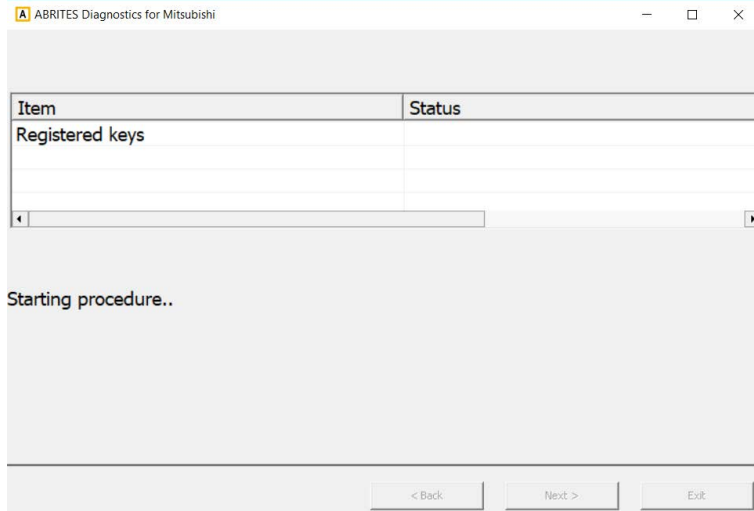
The "Simplified Key Registration" option can be applied when no working key is available and when no PIN can be read. It can also be used if there is a need of adding a spare key as well. The function makes the key programming for Mitsubishi more simple and easy to do. It requires a TagProg or ProTag programmer to work. The Mitsubishi Colt model (2004-2007) is the only model that is not covered by the function, so the PIN code needs to be entered.

To start the "Simplified Key Registration", open the "Key Learning" menu found in the Special Functions tab and click "Next" so the software can automatically identify the model. Once entered, the screenshots below demonstrate the "Simplified Key Registration" function:

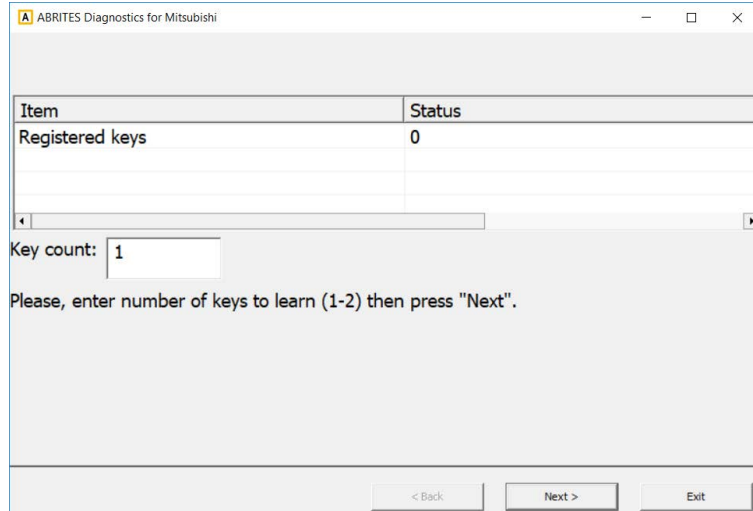
#### 1. Press "Next" to start the procedure



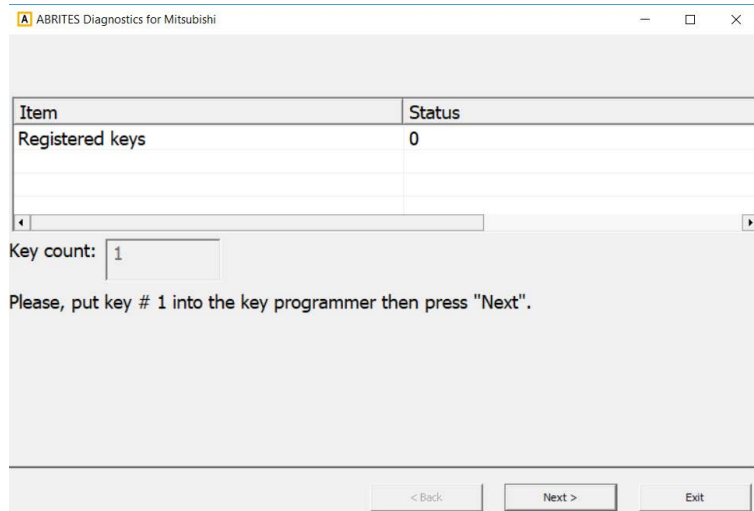
#### 2. The procedure is in progress



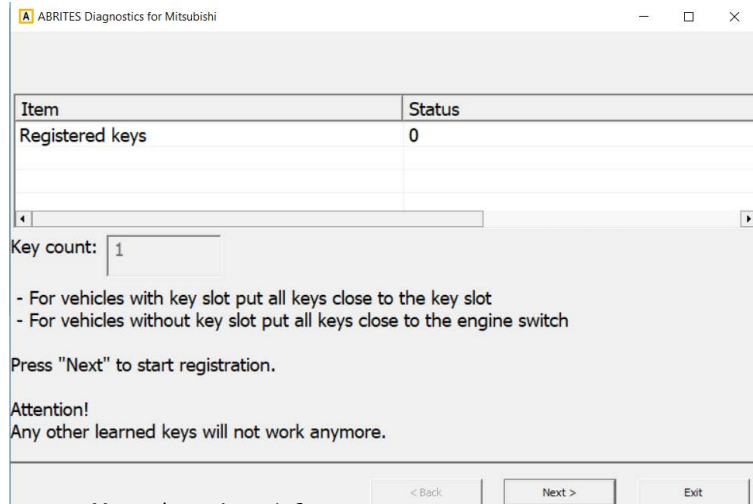
#### 3. Enter the desired number of keys to be learned



#### 4. Insert the first key into the programmer



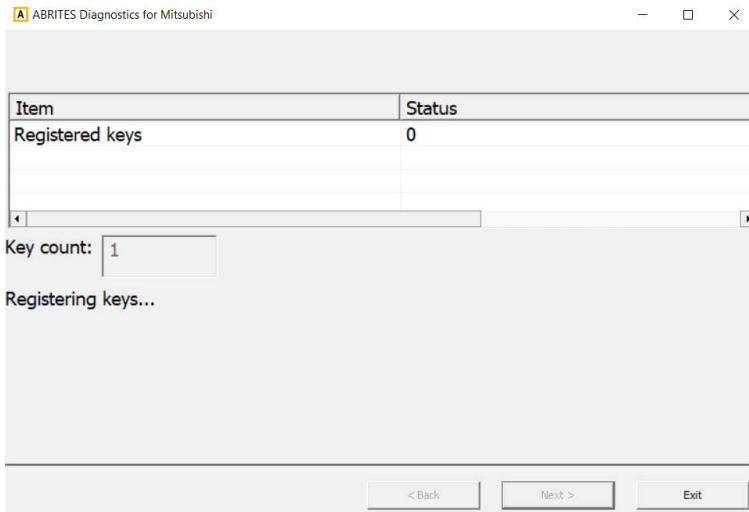
#### 5. Hold the key close to the IGN coil



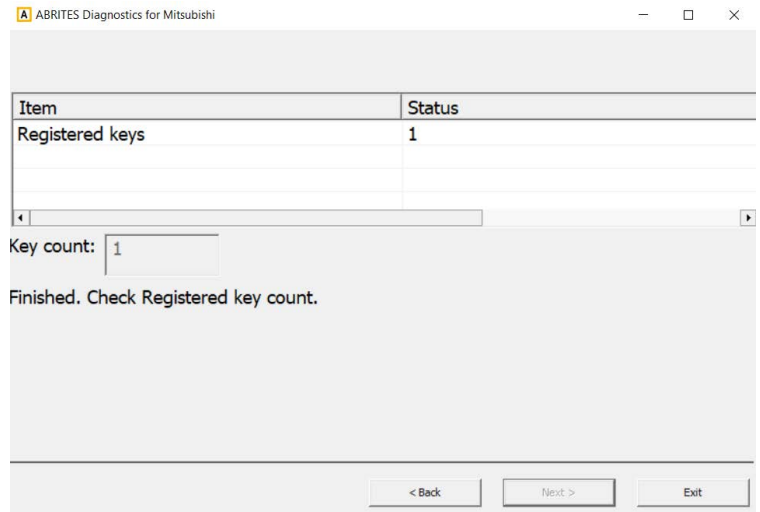
#### 6. This can be used to position the keys



### 7. Registering the keys



### 8. The procedure has successfully finished



### 2.2.2 “Dump Tool”

By using this special function it is possible to calculate odometer values, display PIN codes, etc.. This application needs the EEPROM dump from the corresponding control unit. After the dump is loaded, some modifications will be made and you need to store the resulting dump as a new file, which you can program with a special programmer into the device that the dump is from. The dump tool receives as input a dump file from the corresponding unit (input dump is loaded with the “Load dump” button). The dump file can be read either via OBDII but also with a programmer (especially for units where reading via OBDII is not possible). As output the dump tool displays some data extracted from the input file and/or makes some modifications to the input data. If modifications were made (for some sub-functions there are no modifications made, only data are visualized) the user has to write the modified dump to the desired file (with the “Save dump” button), and then this modified dump should be saved back to the device via OBDII or with a programmer. If data are read/written with a programmer the user must make sure that the proper byte order is used. Because most of the programmers are reading the data on 16bit words, the byte order in the dump depends on the used programmer – some programmers produce dumps starting with the least significant byte, and some produce dumps starting with the most significant byte. This means that for the same unit two different programmers can produce different dumps. For that purpose a button “Swap bytes” is provided. This button changes alternatively the byte order into the dump. So, if after loading the dump file into the dump tool data cannot be extracted or modified, please try to swap the bytes to get a correct result.

### 2.2.3 SW Update

The "SW Update" Special function checks if the modules built in the car need to be updated. If the software identifies that the modules need an update, it allows the user to run it. The procedure requires internet connection and active AMS as the flash files are downloaded from the Abrites servers.

The updates database contains data up to 19.07.2017.

### 3 APPENDIX

#### 3.1 *Smart Key (Fast System) key programming procedure*

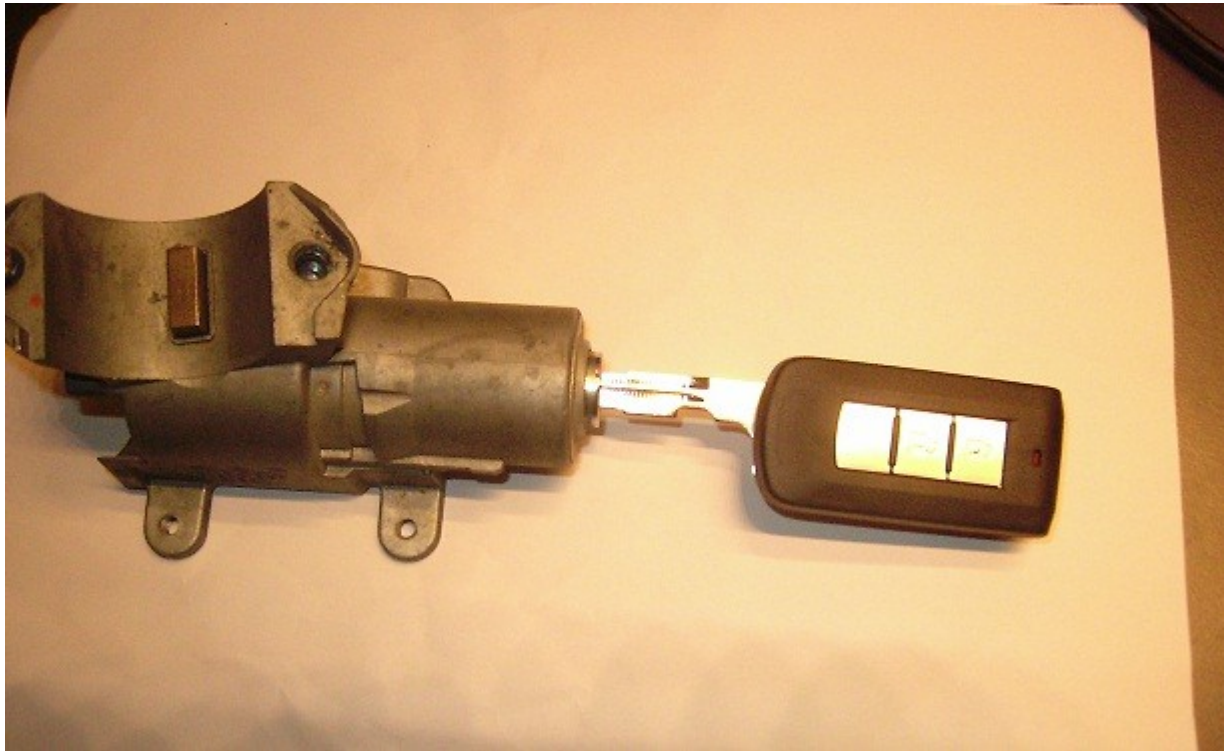
In the picture below you can see how the smart key looks like. There is a remote with buttons and inside you will find a metal blade.



You must have a blade that will fit into the ignition lock of the vehicle.



On the ignition lock there is a black cover. You must remove this black cover and put in the metal key blade. Turn the ignition on and put the smart key on the blade.



Now you may start program the key. Make sure that you are using the correct PIN code by pressing the button “Help”. If the PIN code is correct the first key will be registered and the Abrates diagnostics for Mitsubishi will inform you that the procedure is successful. After that you may proceed to register more keys. After you finish programming the keys you are ready to proceed with the KOS key (this is the remote control programming).

Turn Ignition ON and press the button “Synchronize Remote Control”. The software will ask you to press twice the <LOCK> button. If everything is fine, you will hear a BEEP sound. Then you can proceed to program the second remote in the same way – press twice the <LOCK> button.

When you have finished programming the remotes you can verify that the car starts and the remote works by pressing the <LOCK> and <UNLOCK> buttons.



### **3.2 Supported models for key learning**

A list of the supported models is available at [www.abrites.com](http://www.abrites.com)